



Regal Renaissance / Antiquity Revival
 Hair: Michelle Thompson
 Make-up: Kamanza Amihyia
 Styling: Lauraine Bailey
 Photography: Gabor Szantai

Contents

54



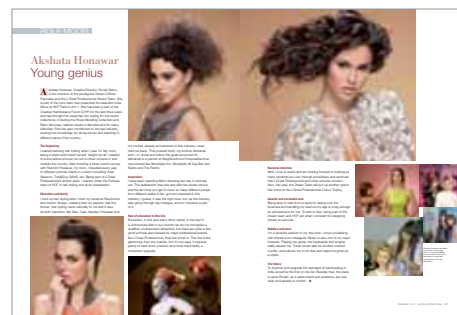
INTERNATIONAL
 stylists

22



- 16 **Snippets** Latest news and updates of the beauty and hair industry
- 20 **New launches** Salons and spas across the country
- 22 **Trends** The Eclectic Collection and Brides with Style
- 32 **Innovation** Schwarzkopf Professional's Bonacure Fibre Force hairtherapy range claims to offer a second chance to damaged hair to attain virgin hair like quality
- 38 **Interview** Emiliano Vitale, of è Salon Wahroonga in Australia, a veteran in hair styling recalls his journey and is deftly climbing the ladder of success
- 40-48 **Cover story** As Indians get conscious, leading hair colour brands have decided to launch at-home variations that promise ease of application, are economical and as effective as salon-use products
- 52 **In first person** Devyani Bajpai, Cut Da Crap Salon, Indore
- 54-59 **International stylists** Renowned stylists create awe-inspiring collections that witness sharp cuts and colour
- 60 **Beauty** Shallu Chandla, make-up artist has created scintillating looks on supermodels who have walked the ramp for established fashion designers
- 68-76 **Spa focus** Visual dynamics of Shamana Spa at Grand Hyatt in Goa; interview of Lalita Chettri of Mayfair Spa in Gangtok; inspiring designs of Six Senses Spa at the Kempinski Hotel Barbaros Bay and spa packages
- 78 **Marketing tools** Attractive offers across spas and salons
- 86 **Celeb style** Bollywood diva Shraddha Kapoor talks about her hair care and fitness regime
- 88 **Influencers** Debarun Mukherjee, an unconventional designer who brought about a revolution in the Indian fashion industry, talks about fashion, trends and his future plans
- 89 **Coffee break** Try this quiz and win prizes
- 91-93 **Events** The social calendar: what's happening when and where
- 96 **Step-by-step** Recreate the intricate hairstyle

50



30



70

